
ENVIRONMENT AUDIT REPORT 2024-25



D. Y. Patil Education Society
(Deemed to be University),
Kolhapur, Maharashtra, India.

CONTENTS

1. ACKNOWLEDGEMENT	3
2. DISCLAIMER	4
3. CONTEXT	5
4. CONCEPT	5
5. INTRODUCTION	6
6. OVERVIEW OF INSTITUTE	8
7. AUDIT OBJECTIVES & SCOPE	14
8. AUDIT PARTICIPANTS	14
9. EXECUTIVE SUMMARY	15
10. AREA OF IMPROVEMENTS	15
11. ENVIRONMENTAL AUDIT - QUESTIONARE	16
11.1. <i>WASTE MINIMIZATION AND RECYCLING</i>	18
11.2. <i>GREENING</i>	19
11.3. <i>ENERGY CONSERVATION</i>	20
11.4. <i>WATER CONSERVATION</i>	22
11.5. <i>CLEAN AIR</i>	23
11.6. <i>ANIMAL WELFARE</i>	24
11.7. <i>ENVIRONMENTAL LEGISLATIVE</i>	24
11.8. <i>GENERAL PRACTICES</i>	25
12. BEST PRACTICES FOR ENVIRONMENT	26
13. RECOMENDATION	29
14. CONCLUSION	30
15. REFERENCE	31
16. SUMMARY OF ENVIRONMENT COMMITTEE	32
17. ANNEXURE – PHOTOGRAPHS OF ENVIRONMENT CONSIIOUSNESS	34

10 ACKNOWLEDGEMENT

Aditya Envirotech Green Audit Team thanks the management of **D. Y. Patil Education Society (Deemed to be University), Kolhapur, Maharashtra, India.** for assigning this important work of Green Audit (Environmental Audit). We appreciate the co-operation to our team for completion of study.

Our special thanks are due to:

- Registrar of the University – Dr. V. V. Bhosale, Registrar, D. Y. Patil Education Society, (Deemed to be University), Kolhapur.
- Green Audit coordinator– Dr. Shimpa Sharma, IQAC Director.
- Green club, Eco friendly campus committee Member– Dr. Krushnath Shirke, S. O. CIR
- Green club, Eco friendly campus committee Member– Mr. K. S. Nirmal, Dept. Registrar.
- Teaching & Supporting Staff of College

For giving us necessary inputs to carry out this very vital exercise of Green Audit (Environment Audit). We are also thankful to other staff members who were actively involved while collecting the data and conducting field measurements.

2.0 DISCLAIMER

Aditya Envirotech Green Audit/Environment Audit Team has prepared this report for **D. Y. Patil Education Society (Deemed to be University), Kolhapur** based on input data submitted by the representatives of university complemented with the best judgment capacity of the expert team.

It is further informed that the conclusions are arrived following best estimates and no representation, warranty or undertaking, express or implied is made and no responsibility is accepted by Audit Team in this report or for any direct or consequential loss arising from any use of the information, statements or forecasts in the report.

If you wish to distribute copies of this report external to your organization, then all pages must be included.

Aditya Envirotech, its staff and agents shall keep confidential all information relating to your organization and shall not disclose any such information to any third party, except that in the public domain or required by law or relevant accreditation bodies. Aditya Envirotech staff, agents and accreditation bodies have signed individual confidentiality undertakings and will only receive confidential information on a 'need to know' basis.



Report by: R. S. Shinde, Lead Auditor

3.0 CONTEXT

We are committed as a component of Corporate Social Responsibility of the Higher Edifying Institutions to ascertain that they contribute towards the minimization of ecumenical warming through Carbon Footprint abbreviation measures.

D. Y. Patil Education Society, Kolhapur (Deemed to be University) Management decided to conduct an external Green Evaluation by a competent Green Auditor along with a Green Audit Assessment Team headed by Dr. V. V. Bhosale, D. Y. Patil Education Society, Kolhapur (Deemed to be University).

Green Audit or Environment Audit focuses on the Green Campus, Waste Management, Water Management, Air Pollution, Energy Management & Carbon Footprint etc. being implemented by the university Management. The concept, structure, objectives, methodology, tools of analysis, objectives of the audit are mentioned below.

4.0 CONCEPT

The term 'Environmental audit' or 'Green audit' means differently to different people. Terms like 'assessment', 'survey' and 'review' are also used to describe similar activities. Furthermore, some organizations/Institutions believe that an 'environmental audit' addresses only environmental matters, whereas others use the term to mean an audit of health, safety and environment-related matters. Although there is no universal definition of Green Audit, many leading companies/institutions follow the basic philosophy and approach summarized by the broad definition adopted by the International Chambers of Commerce (ICC) in its publication of Environmental Auditing (1989).

The ICC defines Environmental Auditing as:

“A management tool comprising a systematic, documented, periodic and objective evaluation of how well environmental organization, management and equipment are performing with the aim of safeguarding the environment and natural resources in its operations/projects.”

The outcome of Green Audit should be established with concrete evidence that the measures undertaken and facilities in the institution under green auditing.

5.0 INTRODUCTION

A Nation's growth starts from its educational institutions, where the ecology is thought as a prime factor of development associated with environment. Educational institutions now a days are becoming more sensitive to environmental factors and more concepts are being introduced to make them eco-friendly. To preserve the environment within the campus, various viewpoints are applied by the several educational institutes to solve their environmental problems such as promotion of the energy savings, recycle of waste, water reduction, water harvesting etc. The activities pursued by colleges can also create a variety of adverse environmental impacts.

Environmental auditing is a process whereby an organization's environmental performance is tested against its environmental policies and objectives. Green audit is defined as an official examination of the effects a college has on the environment. As a part of such practice, internal environmental audit (Green Audit) is conducted to evaluate the actual scenario at the campus.

Green audit can be a useful tool for a college to determine how and where they are using the most energy or water or resources; the college can then consider how to implement changes and make savings. It can also be used to determine the type and volume of waste, which can be used for a recycling project or to improve waste minimization plan. Green auditing and the implementation of mitigation measures is a win-win situation for all the college, the learners and the planet. It can also create health consciousness and promote environmental awareness, values and ethics. It provides staff and students better understanding of Green impact on campus.

Green auditing promotes financial savings through reduction of resource use. It gives an opportunity for the development of ownership, personal and social responsibility for the students and teachers. Thus, it is imperative that the college evaluate its own contributions toward a sustainable future. As environmental sustainability is becoming an increasingly important issue for the nation, the role of higher educational institutions in relation to environmental sustainability is more prevalent.

A clean and healthy environment aids effective learning and provides a conducive learning environment. There are various efforts around the world to address environmental education issues.

Environmental Management Systems (EMS) is very popular in the industrial sector, but the general belief is that EMS is something pertaining to industries only. Other parts of the world have started adopting compatible environmental management systems either voluntarily or for promoting standards by external certification. International environmental standards do not suit the existing Indian educational system. Hence Aditya envirotech has developed a compatible system by developing locally-applicable techniques.



A very simple indigenized system has been devised to monitor the environmental performance of educational institutions. It comes with a series of questions to be answered on a regular basis. Environmental conditions may be monitored from angles that are relevant to Indian requirements, without stress on legal issues or compliance.

This innovative scheme is user-friendly and totally voluntary. The environmental monitoring system helps the institution to set environmental examples for the community and to educate young learners. It can be adapted to urban and / or rural situations.

6.0 OVERVIEW OF INSTITUTE

D. Y. Patil Education Society, (Deemed to be University), Kolhapur.

Established Under: Section 3 of the UGC Act 1956

Established on: 1st September 2005

Discipline: Health and Allied Sciences

Motto: 'Dnyanadheenam Jagat Sarvam'

Guided by well-defined, clearly articulated Vision, Mission and Goals the University offers contemporary & innovative programs through its Medical College, College of Nursing, School of Hospitality, College of Physiotherapy and the Centre for Interdisciplinary Research. Skill based employability-driven programs include DMLT, OT Technician Training Certificate, Dialysis Technician Certificate in addition to MBBS, MD/MS, Medical Fellowships, B.Sc. in Hospitality, B.Sc, PB. B.Sc. and M.Sc. Nursing, M.Sc. programs in Medical Physics, B.PTh, Stem Cell and Regenerative Medicine, Medical Biotechnology and Doctoral programs in Interdisciplinary and Medical subjects.

Organisational values of transparency, participative management and decentralisation are reflected in internal quality assurance efforts, modernisation of the examination system, regular meetings of the Heads of Department and various statutory and non-statutory bodies. University has introduced an Annual Quality Assurance Exercise attesting to the pursuit of quality in all aspects at all times. Feedback from different stakeholders is used to assess, improve and excel in performance. Through this efforts University has been re-accredited with 'A' grade in 2017 which is valid for the period of five years. The University was ranked in top 100 Universities in India in 2018 by NIRF.

An ISO:9001-2015 certified, 800-bedded multispecialty Hospital provides academic, clinical training and a research platform. Free, rural medical camps and subsidized treatment ensure that primary to tertiary services are available to the poorest of the poor.

In keeping with Digital India mission, e-governance is instituted through pervasive use of computerisation and technology in all departments, moving towards paper-less offices. Extensive use of ICT in education is supported by the latest in infrastructural requirements such as LCDs, Smart Boards, Visualizers, Simulations. Digital Library, E-database subscription (Pro-Quest, Pro-Quest Ebrary, INFLIBNET, NKN, MUHS e-resources), Telemedicine, Wi-Fi campus, OPAC in the library and Radiology department etc. contribute to the 'Digital India' vision. A customized Learning Management System allows for better curriculum delivery.

In keeping with global trends in higher education, University imparts to all students a globally relevant and locally applicable curriculum of international standards. Outcome and Skill based training is achieved through the Clinical Skill Labs, Cadaveric Skill Lab, an active Medical Education Training Unit, adoption of the latest pedagogy and assessment methods. Incorporation of research in both UG and PG programs,

evidence-based teaching, interactive and case-based learning, early clinical exposure, industry-academia collaborations, remedial classes and emphasis on field and community-based visits ensure our graduates are competitive for both higher education and employment opportunities.

APJ Abdul Kalam Incubation Cell of the University was formed as continuum of the Brainstorming Unit in the RICH Cell (Research in Comprehensive Health). Start-Up Hero (2018) of the State of Maharashtra was awarded by the Hon'ble Union Minister Mr. Nitin Gadkari to Mr. Abhinandan Patil our PhD student. In Health Category at the same Start-Up camp, both first and second prizes were awarded to PhD students Mr. Deepak Sawant and Ms. Priyanka Patil. Presently the University hosts a DST-Inspire Fellow Dr. Umakant Patil and a Ramanujan Fellow Dr. J. L Gunjekar. Ms. Shital Kale was awarded the SERB Overseas Fellowship. This has been possible due to experienced faculty, coordinated Comprehensive Research Promotion Practices and requisite administrative and financial support. Research projects funded by ICMR, SEB-DST, CSIR, DRDO, BRNS, etc., and by the University are undertaken at facilities like Advanced Research Facilities, Animal House, Instrumentation lab, 3-D Printers, Stem Cell Research facility, Central Laboratory at the hospital, RICH Cell. Nineteen patents published/awarded, 17 books, 25+ chapters and 30+ conference proceedings, 1300+ publications and MOUs and collaborations in India, Australia, Sweden, South Korea, Taiwan, Nigeria, UK are some outcomes. Last year, total of 87 conferences and workshops and 103 Guest lectures were organised here and faculty attended 530 academic events in India and abroad. Other initiatives include Research certification of Undergraduates, annual research events for UG (Second MBBS Alliance for Research Training) and PG (Campaign Of University Research Training) students, Research Methodology workshops for UG, PG and Pre-PhD students, student exchange, faculty exchange, hosting and invited talks. The complement of 220 Postgraduate students and 70 PhD scholars and post-doctoral fellows carry out research in basic sciences and clinical areas as well as in emerging areas of nanomaterials, stem cell & regenerative medicine, medical physics, targeted drug delivery, nanobiotechnology, biosensors etc.

Holistic student development is a priority. Measures such as University Moral Guidance Scheme, Student Guardianship Program, Student Councils, PG Club, NSS, Women Development Cell, Internal Complaint Cell, Anti-Discrimination Cell, Student's Grievance Cell, Entrepreneurship Cell, Anti-ragging cell, Student Welfare Cell all contribute to providing a motivating and supportive environment conducive to optimising personal and professional potential of students.

Universal values and skills are integrated in student training through Students Bioethics Wing of UNESCO Bioethic Unit, NSS, soft-skills training, Language class, Counselling Centre, mentoring programs, career counselling, celebration of National days, social gatherings, sports and extracurricular activities. Students participate in programs such as Swachh Bharat Abhiyaan, Unnat Bharat Abhiyaan, Swachhata-hi-Seva, Rural Community Oriented Medical Training, Beti-Bachao Beti-Padhao, Handwashing campaign, Clean our Schools campaign, Stop Plastic campaign, save the girl child as also in social awareness walkathons, street plays, skits and roadshows.

A conscionable ISR yielded Public-Private Partnerships encompassing one Urban and four Primary Health Centers and one Rural Health training Center, Village Adoption program, five-village adoption under Unnat Bharat Abhiyaan program and RCOMET (Rural Community Oriented Medical Training) at four villages in Kolhapur District. The Family Health Insurance scheme launched by the Hospital ensures highly subsidized, affordable, State-of-the-Art primary and secondary health care to the populace.

Go-Green initiatives include using LED lights, roof-top solar panels, biogas plants, sewage treatment plants, recycling of e-waste, biomedical and sewage waste, composting, tree plantations etc. in our campus, in addition to spreading awareness and education in the rural areas adopted. Twice in succession the campus has been shortlisted in the National Swachh Bharat competition for educational institutions. Every successive accomplishment serves to bolster our enthusiasm, strengthen our belief and motivates us to do what Sam Levenson said, "Don't watch the clock; do what it does. Keep going."

The Vision

To emerge as a premier global institution committed to quality-centric higher and professional education, refutative research, and comprehensive training, promoting inquisitive innovation, ingraining human values, and nurturing skilled professionals, who excel in global competitiveness in an all-round manner while embodying strong social responsibility and accountability.

The Mission

1. To deliver quality-centric offline and online educational programs, conducting and promoting cutting-edge research that advances knowledge and fosters inquisitive innovation and transformative learning blended with out of box thinking.
2. To promote a culture of creativity, entrepreneurship and life-long learning, empowering the learners and faculty to generate impactful solutions towards mitigation of worldwide contemporary and long-term concerns and challenges.
3. To instill ethos principles, social responsibility, commitment to equity, diversity and inclusivity in an all-round manner.
4. To equip the learners with the armory of positive attitude, updated knowledge, meaningful skills, immaculate leadership, and experiences vital to excel in the competitive global parlance availing state-of-art infrastructure.
5. To meaningfully engage with local and global communities to address pressing concerns and challenges and contribute to their mitigation towards sustainable development and overall well-being of populace and mother planet in unison.

Institutional Objectives:

To emerge in the Global comity of accredited and top-ranked higher education institutions in the incoming decade and meaningfully transform the demographic dividends into most precious human resource.

Sustainable Development Goals (SDG):

In period from June 2023 – December 2024, the University is additionally adopted Sustainable Development Goals 6, 7, 8, 9, 10 and 11 under guidance of Prof. Dr Shimpa Sharma, IQAC Director. Contributions in the SDGs pertaining to Environment and Natural Resources are embedded in its daily functioning and operations.

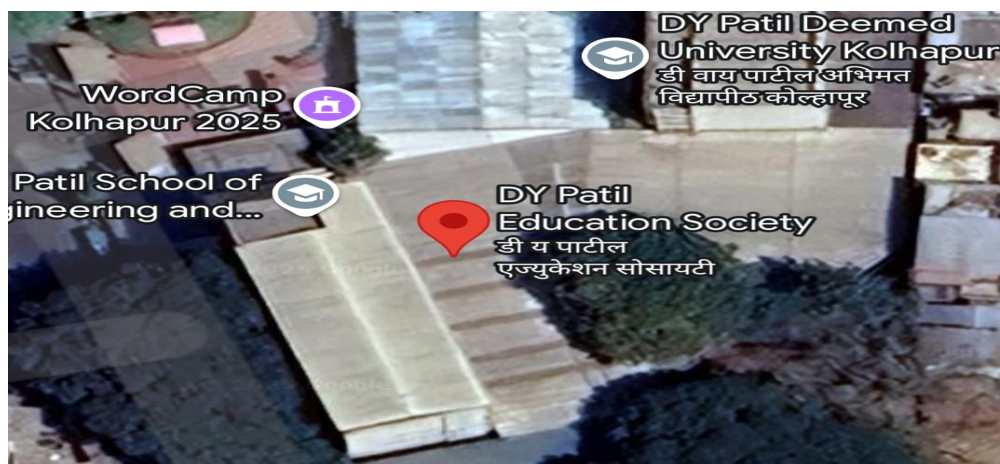
1. SDG 3: Good Health and Well-Being
2. SDG 4: Quality Education
3. SDG 5: Gender Equality
4. SDG 6: Clean Water and Sanitation
5. SDG 7: Affordable and Clean Energy
6. SDG 8: Decent Work and Economic Growth
7. SDG 11: Sustainable Communities and Cities
8. SDG 12: Responsible Consumption and Production
9. SDG 13: Climate Change

Geographical Description of the area –

Kolhapur is an inland city located in south-west Maharashtra state. Kolhapur lies between Latitude 15°73' to 17°11' and Longitude 73°75' to 74°70'. Kolhapur is situated at 546 meter height from sea level and its proximity to the eastern slopes of the Sahyadri.

Kolhapur's climate is a blend of coastal and inland elements common to Maharashtra. The temperature ranges between 10 and 35 °C. Summer in Kolhapur is comparatively cooler, but much more humid, than neighbouring inland cities. Maximum temperatures rarely exceed 35 °C (95 °F) and typically range between 33 and 35 °C. Lows during this season are around 24 to 26 °C. The city receives abundant rainfall from June to September, attributed to its proximity to the Western Ghats. These heavy rains often result in severe flooding during these months. Temperatures are lower in the rainy season, ranging between 19 and 30 °C.

Kolhapur experiences winter from November to February. Lows range from 9 to 16 °C, while highs are in the range of 24 to 32 °C, owing to its high elevation and proximity to the Western Ghats. The low humidity during this season contributes to pleasant weather.



Total Campus area:

Sr. No.	Specification	Information
1	Total Campus Area	23 acres
2	Build Area	8,08,460 sq.ft.
3	Total Number of Classrooms	51
4	Total Toilets Western / Indian	401
5	Total Urinals	80
6	Total Water Coolers With Capacity	52
7	Monthly Electric Bill	Average 2,50,000/-
8	Water Quantity	Sufficient
9	Quality Analysis	Drinkable

D. Y. Patil Education Society (Deemed to be University), Kolhapur imparts education to Under graduates and Post graduate students in the following Colleges:

- D. Y. Patil Medical College, Kolhapur
 1. MBBS
 2. Master of Surgery (M.S.)
 3. Doctor of Medicine (M.D.)
 4. Fellowships

- D. Y. Patil College of Nursing, Kolhapur
 1. B.Sc. Nursing
 2. Post Basic B.Sc. Nursing
 3. M.Sc. Nursing

- Centre for Interdisciplinary Research (CIR), Kolhapur
 1. M. Sc. in Medical Physics
 2. M. Sc. in Stem Cell & Regenerative Medicine
 3. M.Sc. in Medical Biotechnology
 4. M. Sc. Physics
 5. Doctor of Philosophy

- D. Y. Patil College of Physiotherapy, Kolhapur
 1. B. P. Th.
 2. M. P. Th.

- D. Y. Patil School of Hospitality, Kolhapur
 1. Hospitality Studies

- D. Y. Patil College of Pharmacy, Kolhapur
 1. D.Pharmacy
 2. B.Pharmacy
 3. Doctor of Philosophy

- D. Y. Patil School of Allied Health Sciences, Kolhapur
 1. Bachelor of Optometry
 2. B.Sc. in Medical Laboratory Technology
 3. B.Sc. in Medical Radiography & Imaging Technology
 4. B.Sc. in Operation Theatre Technology

- School of Engineering & Management, Kolhapur
 1. Computer Science and Engineering
 2. Electronics and Telecommunication Engineering
 3. Computer Science and Engineering (Data Science)
 4. Electrical Engineering
 5. Bachelor of Business Administration
 6. Bachelor of Computer Applications
 7. Master of Computer Applications
 8. Master of Business Administration
 9. Ph.D. Entrance Guidelines

- Dr. D. Y. Patil Medical College Hospital & Research Institute, Kadamwadi, Kolhapur

- Simulation and Skills Centre, Kolhapur

7.0 OBJECTIVES AND SCOPE

The broad aims/benefits of the eco-auditing system would be

- Environmental education through systematic environmental management approach
- Improving environmental standards
- Benchmarking for environmental protection initiatives
- Sustainable use of natural resource in the campus.
- Financial savings through a reduction in resource use
- Curriculum enrichment through practical experience
- Development of ownership, personal and social responsibility for the College campus and its environment
- Enhancement of College profile
- Developing an environmental ethic and value systems in young people

8.0 AUDIT PARTICIPANTS

On behalf of Institute:

Name	Position/Department
Dr. V. V. Bhosale	Registrar, D. Y. Patil Education Society, Kolhapur (Deemed to be University)
Dr. Shimpa Sharma	IQAC Director
Dr. Krishnath Shirke	S. O. CIR
Mr. K. S. Nirmal	Dept. Registrar

On behalf of Aditya Envirotech:

Name	Position	Qualification
Mr. R. S. Shinde	Lead Auditor	M.Sc. (Environment Sc.), ISO 14001:2015

9.0 EXECUTIVE SUMMARY

An environmental audit is a snapshot in time, in which one assesses campus performance in complying with applicable environmental laws and regulations. Though a helpful benchmark, the audit almost immediately becomes outdated unless there is some mechanism in place to continue the effort of monitoring environmental compliance. D. Y. Patil Education Society, Kolhapur (Deemed to be University) Kolhapur had already done internal green assessment and annual reports published for continual improvements; QS Programme and doing their bid towards environmental protection and environmental awareness at local and global front. Audit criterion is environmental cognizance, waste minimization and management, biodiversity conservation, water conservation, energy conservation and environmental legislative compliance by the campus. A questionnaire is used during audit. This audit report contains observations and recommendations for improvement of environmental consciousness.

10.0 AREAS OF IMPROVEMENT

- Environment Policy, adopted by the College Campus.
- Maintain the inventory of ground water extraction resource Open well, bore well.
- Storage of chemicals like; paints, gums resins, oils, lubricants, acids etc. in designated place and safety/warning signs should be displayed.
- Internal inspection system should be developed for various aspects of environment available in campus
- Continue working towards composting the post-consumer food waste generated by the dining halls.
- Encourage student project on environmental footprint for College.
- Display environment awareness slogans on classroom walls.

11.0 ENVIRONMENTAL AUDIT - QUESTIONNAIRE

The areas of eco/environmental/green auditing to be followed/practiced by participating institutions:

- 11.1.1 Waste Minimization and Recycling
- 11.1.2 Green Campus
- 11.1.3 Energy Conservation
- 11.1.4 Water Conservation
- 11.1.5 Clean Air
- 11.1.6 Animal Welfare
- 11.1.7 Environmental Legislative
- 11.1.8 General Practices

Does any Environmental Audit conducted earlier?

The college has conducted the Green Audit. The Annual reports records reviewed during the audit, main focus of this is to bring awareness of environmental values in students and society. Now, the external audit for environment is awarded to Aditya envirotech for a systematic way of monitoring the environmental eminence initiative, taken by college for environment protection.

What is the total population of the Institute?

	Male	Female	Total
Students	3232	1835	5067
Teachers	174	154	328
Non-Teaching Staff	603	398	1001
Sub Total			6396
Approximate Number of Visitors (Per day)			400-500
What is the total number of working days of your campus in a year?			250-260 approx.

*Note: * The futuristic recruitments included in total population (Teaching Staff #; Non-Teaching Staff #)*

Where is the campus located?

The campus is Located in Kolhapur city, Dist.- Kolhapur.

Which of the following are available in your institute?

1 Garden area	Available
2 Play ground	Available
3 Kitchen	Available
4 Toilets	Available
5 Garbage or Waste Store Yard	Available
6 Laboratory	Available
7 Canteen	Available
8 Hostel Facility (2)	Available
9 Guest House	Available
10 Gymnasium	Available

Which of the following are found near your institute?

1 Municipal dump yard	Not in vicinity of institute
2 Garbage heap	No Garbage heaps
3 Public convenience	Yes
4 Sewer line	1 km sewer line within campus
5 Stagnant water	No stagnant water
6 Open drainage	No
7 Industry – (Mention the type)	No
8 Bus / Railway station	Faraway from campus
9 Public halls	No

11.1 WASTE MINIMIZATION AND RECYCLING

<p>1. Does your institute generate any waste? If so, what are they?</p>	<p>Yes, Solid waste, Kitchen waste, paper waste, plastic waste, toiletry waste, Horticulture Waste, etc.</p>			
<p>2. What is the approximate amount of waste generated per day? (In Kilograms/Day) (approx.)</p>	<p>Bio Degradable</p>	<p>Non-Biodegradable</p>	<p>Hazardous</p>	<p>others</p>
	<p>70-80 kg</p>	<p>1-2 kg</p>	<p>--</p>	<p><1kg</p>
<p>3. How is the waste generated in the institute managed? By</p> <ol style="list-style-type: none"> 1 Composting 2 Recycling 3 Reusing 4 Others (specify) 	<p>For Solid Waste Management one composting unit is operational on back side of the college, Reuse of one side printed Paper for internal communication. Sewage water is discharged to STP (Capacity- 150 KLD). Domestic Waste is given to Municipal Corporation. Waste bins are provided at campus for biodegradable and non-biodegradable waste. Composting Bed is built for Horticulture waste. Incinerator is used for managing sanitary waste. Effluent Treatment Plant provided 35 KLD for Operation Theater & Lab waste water.</p>			
<p>4. Do you use recycled paper in institute?</p>	<p>No</p>			
<p>5. Do you use reused paper in institute?</p>	<p>Yes</p>			
<p>6. How would you spread the message of recycling to others in the community? Have you taken any initiatives? If yes, please specify.</p>	<p>Yes, college carried out numerous activities. Recycling campaigns, e waste management, Anti-plastic campaigns, Tree Plantation, sustainable goal awareness programme.</p>			
<p>7. Can you achieve zero garbage in your institute? If yes, how?</p>	<p>Yes, as per new waste management rules all kind of waste is managed in an adequate manner without any deviation.</p>			

11.2 GREENING THE CAMPUS

8.	Is there a garden in your institute?	Yes, about 10-11 Acre is the Green Area.	
9.	Do students spend time in the garden?	2-4 Hours during working days	
10.	Total number of Plants in Campus	Plant type	Approx. number
		Trees	More than 250
		Shrubs & Herbs	More than 500+
		Grass Cover	2-3 Acre
11.	Suggest plants for your campus. (Trees, vegetables, herbs, etc.)	Ashoka (Polyalthia Longifolia), Mango (Mangifera Indica), Neem (Azadirakta indica), Coconut (Cocos nucifera), Royal Bottle Palm, Guava (Psidium guajava), Moringa, Tamarind and many more as per geographical regime.	
12.	Is the College campus have any Botany Department	No	
	Number of Staff working in Horticulture Department	Ten Gardeners	
13.	Number of Tree Plantation Drives organized by college per annum. (If Any)	Yes, Tree Plantation Drives are Organized Annually. 500+ trees and 100+ Herbs & Shrubs planted in this financial year.	
14.	Number of Trees Planted in Last FY.	500+ Approx.	
	Survival Rate	90%	
15.	Plant Distribution Program for Students and Community	Yes, Seed Bank is developed and, Saplings are distributed to Students and visitors at various Occasions.	
16	Plant Ownership Program	Yes	

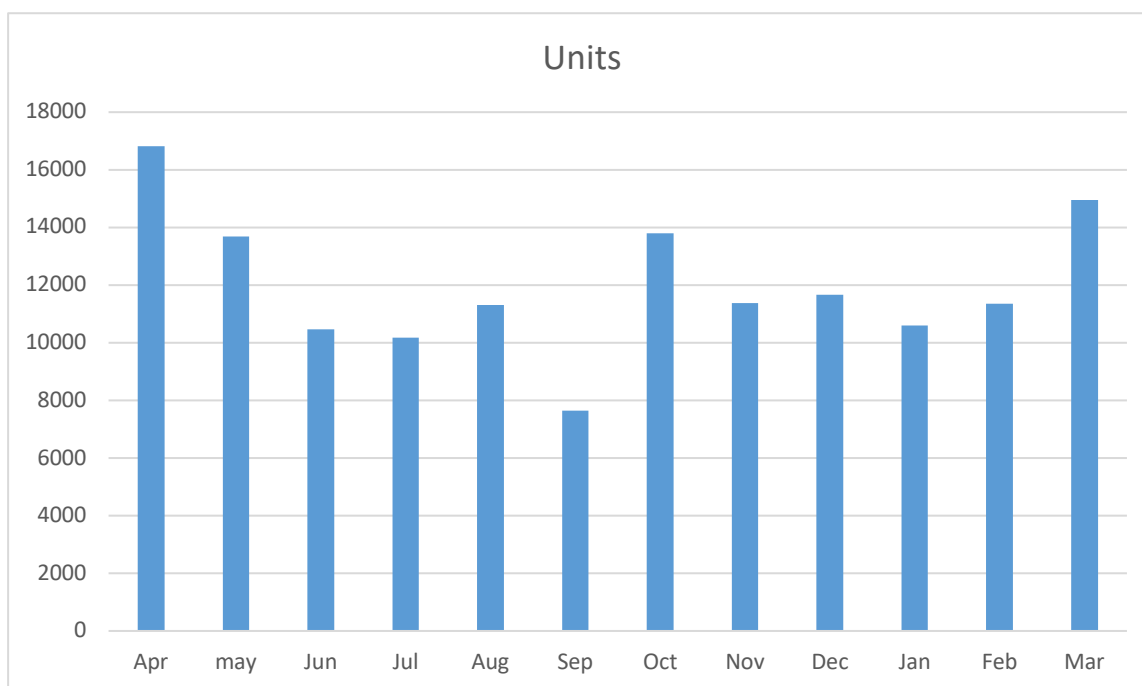
11.3 ENERGY

17.	List few ways that you use energy in your institute. (Electricity, LPG, firewood, others). Using this list, try to think of ways that you could use less energy every day.	Electricity is saved by use of LED bulbs for illumination, LPG is saved by use of Pressure cookers for cooking food. Alternate source of energy, Solar System, Solar street lamps, solar water heaters.
18.	Are there any energy saving methods employed in your institute? If yes, please specify. If no, suggest some	Yes, Messages is displayed at various locations to aware the People about Energy Savings. Use of Natural Lights and Natural Ventilation is promoted.
19.	How many CFL/LED bulbs has your institute installed?	80 % of Total Conventional bulbs are replaced by LED Lights.
20.	Are any alternative energy sources employed / installed in your institute? (Photovoltaic cells for solar energy, windmill, energy efficient stoves, etc.) Specify.	Yes, Solar plant installed.
21.	Do you run "switch off" drills at institute?	Yes
22.	Are your computers and other equipment's put on power-saving mode?	Yes, In Practice
23.	Does your machinery (TV, AC, Computer, weighing balance, printers, etc.) run on standby modes most of the time? If yes, how many hours?	No

Table showed the power consumption details of year 2024-25

S.No	Month	Electricity Consumption (KVAH)
1	Apr	16826
2	May	13696
3	Jun	10459
4	Jul	10175
5	Aug	11306
6	Sep	7651
7	Oct	13808
8	Nov	11373
9	Dec	11666
10	Jan	10589
11	Feb	11360
12	Mar	14944

Energy consumption trend is in accordance with electricity readings captured by MSEDCL with Bill consumer No. 266519101556, Bill Cycle April 2024 to March 2025



11.4 WATER CONSERVATION

24.	List uses of water in your institute	Basic usage of water in campus are; Drinking, Gardening, Laboratory, Kitchen, Toilets, and Others. And total consumption is approx. 250-300 KL/day
25.	How does your institute store water? Are there any water saving techniques followed in your institute?	Avoid overflow of water-controlled valves are provided in water supply tanks.
26.	If there is water wastage, specify why and How can the wastage be prevented / stopped?	No
27.	Locate the point of entry of water and point of exit of waste water in your institute.	Entry- Water comes from Borewell & Municipality watersupply at campus Exit- From Water Drainage System to the back gate of campus to STP & ETP.
28.	Write down few ways that could reduce the amount of water used in your institute	By Following ways: 1. Close the taps after usage 2. Maintenance and monitoring of valves in supply system to avoid overflow, leakage and spillage 3. Water Conservation awareness for new students
29.	Record water use from the institute water meter for six months (record at the same time of each day). At the end of the period, compile a table to show how many liters of water have been used.	Not available
30.	Does your institute harvest rain water?	The rain water that is collected in ground of college campus is diverted towards gardening & percolation.
31.	Is there any water recycling System.	Yes. Sewage & Effluent Treatment Plant. Recycled water used for gardening purpose.

11.5 CLEAN AIR

32	Are the Rooms in Campus are Well Ventilated?	Yes				
33	Window Floor ratio of the Rooms	Very Good				
34	Provide details of school-owned motorized vehicles?	Buses	Cars	Vans	Other	Total
	No. of vehicles	75	12	6	2	--
	No. of vehicles more than five years old	--	--	--	--	--
	No. of Air conditioned vehicles	--	--	--	2	--
	PUC done	Yes	--	--	--	--
35	Specify the type of fuel used by your school's vehicles:	Total				
	Diesel	81				
	Petrol	12				
	CNG	--				
	LPG	--				
	Electric	20				
36	Air Quality Monitoring Program (If Any)	No monitoring is being done				
37	Students suffer from respiratory ailments? (If Any)	No				
38	Details of Genset	Yes, Capacity-300 KVA, 3 Nos.				

11.6 ANIMAL WELFARE

39	List the animals (wild and domestic) found on the campus (dogs, cats, squirrels, birds, insects, etc.)	Squirrels are found in the campus, others including butterflies, Lizards, insects, bees, earthworms, cats etc. are there in campus.
40	How many dogs in your area have undergone Animal Birth Control - Anti Rabies (ABC - AR)?	Not required
41	Does your institute have a Biodiversity Programme?	Yes

11.7 ENVIRONMENTAL LEGISLATIVE COMPLIANCE

42	Are you aware of any environmental Laws pertaining to different aspects of environmental management?	Yes
43	Does your institute have any rules to protect the environment? List possible rules you could include.	They have banned single use plastic. Their environment policy includes awareness, and environmental conservation efforts through college and other Departments. Some under graduates are studying the paper of Environmental Sciences, prescribed by UGC.
44	Does Environmental Ambient Air Quality Monitoring conducted by the Institute?	NA
45	Does Water and Wastewater Quality monitoring conducted by the Institute?	Yes, Waster water quality monitoring done on regular basis.
46	Does stack monitoring of DG sets conducted by the Institute?	No. DG set available with capacity 300 KVA
47	Is any warning notice, letter issued by state government bodies?	No

48	Does any Hazardous waste generated by the Institute?	No.
49	Does any Bio medical waste generated by the Institute? If yes explain its category and disposal method	Yes, collected by authorized vendor on daily basis.

11.8 GENERAL

50	Are you aware of any environmental Laws pertaining to different aspects of Environmental management?	Yes
51	Does your institute have any rules to protect the environment? List possible rules you could include.	Yes, there are some rules like e banned single use plastic. Their Environmental Policy includes awareness and Environmental conservation.
52	Does housekeeping schedule in your campus?	Yes, Swatch Bharat movement
53	Are students and faculties aware of environmental cleanliness ways? If Yes Explain	Yes, Periodically pollution reduction, plantation, energy conservation awareness campaigns carried out by institute
54	Does Important Days Like World Environment Day, Earth Day, and Ozone Day etc. eminent in Campus?	Yes
55	Does Institute participated in National and Local Environmental Protection Movement?	Yes, Swatch Bharat Abhiyan by students at campus.
56	Does Institute has any Recognition/certification for environment friendliness?	Yes
57	Does Institute using renewable energy?	Yes.
58	Does Institution conducts a green/environmental audit of its campus?	Yes
59	Has the institution been audited / accredited by any other agency such as NABL, NABET, TQPM, NAAC etc.?	Yes, NAAC grade A++

12.0 BEST PRACTICES/INITIATIVES FOR ENVIRONMENT

A	<p>Renewable Energy</p> <p>Solar plant installation is completed at D. Y. Patil Education Society, Kolhapur (Deemed to be University) D. Y. Patil Vidyanagar, Kasaba Bavada, Kolhapur, 416006.</p> <p>A clean source of energy being utilized at campus.</p>	
B	<p>Biodiversity Conservation</p> <p>Flora and fauna conservation</p>	<p>They have lush green campus which provides habitat to various species. Recently conducted bird watching reports Pigeon, house crow, Asian Koel, Common swift, wood pecker, Small Bee-eater, House Sparrow, Common Myna, Indian Cuckoo, parrots, bulbul etc.</p>
C	<p>Tree Plantation Drives</p> <p>Two Drives Annually as well as Every Guest is honored by Tree Plantation at Campus.</p>	<p>Yes, periodically the plantation drives by students and staff of campus.</p>
d	<p>Ground Water Recharge</p> <p>Rain Water Harvesting System.</p>	<p>Yes, Natural ground water recharge of the rain water</p>
E	<p>Pollution Reduction Personal Vehicles (Students) not allowed at campus</p>	<p>Reduction in Air Pollution through vehicular emission. No vehicle day.</p>
F	<p>E Waste Management</p> <p>Collection of e-waste by staff</p>	<p>E waste is sent to the authorized recyclers for adequate disposal</p>
G	<p>Solid Waste Management</p> <p>Lifting of garbage from campus every day by Municipal Corporation.</p>	<p>Yes, different mechanisms for proper disposal and recycling of e-waste, plastic waste, biodegradable waste and bio-medical waste.</p>

H	Adoption of Village/society CSR	No, but the General Environmental awareness campaigns like Beat the Plastic initiated by campus.
I	Water Conservation	Yes, water saving push taps fitted in the drinking water zone and the toilets to avoid the wastage.
j	Corporate Resource Center (CRC)	No.

Green Campus Policy of College

Cultivation of Eco-Friendly Green Campus is a prime motto of our university. Through different environment friendly practices and education system we jointly promote sustainable and eco-friendly environment in the campus by adopting, practicing and promoting environmental friendly practices among students and staff to generate Eco-consciousness among them and in the world around them. The green campus initiatives offers an institution the opportunity to take the lead in redefining the environmental culture of society and develop new pattern for creating sustainable solutions related to environmental, social and economic needs of the mankind.

Objectives:

- To bring awareness among the students about the hazards spoiling the environment.
- To help the students understand each individual’s responsibility to take an initiative to save the environment.
- To help students take small steps in saving the environment and create awareness amongst public
- To encourage students to keep environment clean.

University try to achieve Green Campus status by making significant progress in different aspects of Environment factors:

- Energy
- Water
- Waste
- Green Campus & Biodiversity,

To reduce energy consumption;

- Activate power management features on your computer and monitor so that it will go into a low power “sleep” mode when you are not working on it.
- Turn off your monitor when you leave your Table.
- Turn off unnecessary lights and use daylight instead.
- Use LED or compact fluorescent bulbs as much as possible
- Switch off lights, fans in conference rooms, classrooms, and lecture halls when they are not in use.
- Energy audit of consumption of electricity in the college campus is conducted

Minimize consumption of water.

- Repair sources of water leakage, such as dripping taps as quickly as possible.
- Encourage use of recycled rainwater and grey water to reduce mains water consumption.
- Reuse the reject water coming out of RO water purification systems for watering plants.
- Use an efficient and hygienic water storage mechanism is to minimize the loss of water during storage.

Waste minimization:

- Keep a stock of paper that has been printed on one side and use it for day to day rough paper work
- Use more readout material in soft form. Reduce the hard readout material. Use more of e-mail for officially communicating the information needed, online reading etc.
- Minimize the use of fertilizers and pesticides in college grounds, opting for the use of vermicompost produced on site wherever possible.
- Reduce the practice of burning plastic and other materials that emit harmful gas on burning. It is prevented in the campus.
- Using two types of bins separately for biodegradable and non-biodegradable wastes in the College campus.
- Dispose the chemical waste generated from the laboratories in a scientific manner.
- For solid waste management a vehicle from municipality comes for collection of solid waste from colleges.
- All Departments and classrooms are provided with dustbins for dry wastage disposal.
- Technology is used to a greater extent for communication among the staff and the students rather than paper communication. WhatsApp - class wise groups, Department wise groups, Committee wise groups facilitate E-communication and use of public address systems reduces usage of paper in notices and circulars.

Green Campus & Biodiversity:

- The students and staff members are given strict instructions to maintain the campus clean and avoid the use of plastic in campus
- Few posters related to the importance of clean and green environment are displayed on the campus.
- Our colleges Peons alternately look after the maintenance of botanical garden, watering trees and waste free clean and Green Campus.
- Education Society celebrates “The World Environmental day” on June 5th every year and by conducting competitions among students and also talks by eminent people to bring awareness.
- The plantation program includes plantation of various types of ornamentals, medicinal and wild plant species.
- No Smoking, No Tobacco”, Tobacco and tobacco products are strictly prohibited in the college premises. The instructions regarding this are given to the students and the staff members. The boards are displayed at various places in the colleges.

13.0 RECOMENDATIONS

- More effectively communicate Environment Policy to all Students, faculties and other staff members.
- Environmental Monitoring i.e. (Ambient Air Quality monitoring, Water monitoring need to be conducted by MPCB & NABL approved laboratory with frequency of six month.
- Reduction in use of paper work by go digital system.
- Water Meter should be installed at institute for monitoring of water consumption.
- Increase in Environmental promotional activities for spreading awareness at campus.
- As practically feasible avoid use of personal vehicles inside the campus.



14.0 CONCLUSION

This audit involved extensive consultation with all the campus team, interactions with key personnel on wide range of issues related to Environmental aspects. The D. Y. Patil Education Society, Kolhapur (Deemed to be University) has Environmental Committee for sustainable use of resources. Overall 60% of Education Society campus is for landscaping. The audit has identified several observations for making the campus premise more environment friendly. The recommendations are also mentioned with observations for campus team to initiate actions.

The audit team opines that the overall site is maintained well from environmental perspective. There is no major observations but few things are important to initiate urgently are waste management records, water balance cycle and periodic inspection of buildings housekeeping and environment policy.

15.0 REFERENCE

- The Environment [Protection] Act – 1986 (Amended 1991) & Rules-1986 (Amended 2010)
- The Petroleum Act: 1934 – The Petroleum Rules: 2002
- The Central Motor Vehicle Act: 1988 (Amended 2011) and The Central Motor Vehicle Rules:1989 (Amended in 2005)
- Energy Conservation Act 2010.
- The Water [Prevention & Control Of Pollution] Act – 1974 (Amended 1988) & the Water (Prevention & Control of Pollution) Rules – 1975
- The Air [Prevention & Control Of Pollution] Act – 1981 (Amended 1987) The Air (Prevention & Control of Pollution) Rules – 1982
- The Gas Cylinders Rules – 2016 (Replaces the Gas Cylinder Rules – 1981
- E-waste management rules 2016
- Electrical Act 2003 (Amended 2001) / Rules 1956 (Amended 2006)
- The Hazardous Waste (Management and Handling and Trans-boundary Movement) Rules,2008 (Amended 2016)
- The Noise Pollution Regulation & Control rules, 2000 (Amended 2010)
- The Batteries (Management and Handling) rules, 2001 (Amended 2010)
- Relevant Indian Standard Code practices
- Internal Records of the Campus

16.0 SUMMARY OF ENVIRONMENT COMMITTEE

The Environment committee of D. Y. Patil Education Society, (Deemed to be University) Kolhapur, aims to spread awareness amongst students regarding the natural environment that they are a part of it, and the impact of their everyday actions on it. We aim to protect the environment by spreading awareness to save energy, water, reducing use of disposable plastics, promoting reusable materials, planting saplings, etc. We believe that better world is not only within reach, but is being built today. We conduct environment friendly events which are not only intellectual, but also interactive and fun to attend. These include workshops, tree plantation drives, rallies, and online awareness campaigns, competitions such as Slam Poetry, Poster Making- online and offline and so on. The Society has also taken pride in being eco-friendly in every little way possible, starting from our paper free, online council elections. The Environment committee currently has over 6396 students & staff under its wing.

The Environment committee focuses on utilizing the power of social media platforms for spreading awareness regarding environment conservation and protection. It has an active WhatsApp on which all the events of the society and environment related posts are uploaded time to time. Technology is used to a greater extent for communication among the staff and the students rather than paper communication. WhatsApp - class wise groups, Department wise groups, Committee wise groups facilitate E-communication and use of public address systems reduces usage of paper in notices and circulars. Use more readout material in soft form. Reduce the hard readout material. Use more of e-mail for officially communicating the information needed, online reading etc.

AWARENESS BUILDING CUM ACTION			
Herbal garden	Medicinal plants planted	Learning about herbs cum gardening	Learning through action
Clear and clean D. Y. Patil Education Society, Kolhapur (Deemed to be University) campus	Attempt to inculcate self-help in cleanliness	Allotted spaces maintenance	To internalize 'no litter and no shame in picking up litter'
Effects of mobile phone Radiation on health	Survey about mobile usage in D. Y. Patil Education Society, Kolhapur (Deemed to be University), campus, Poster campaign; later activists to address issues	Currently awareness building	On green board
Effects of e-waste	Information campaign	To drive home good practices of disposing off e-goods	On green board

Environment committee identified and put-up nameplates of different medicinal species of trees present in our college campus for developing awareness about diversity in nature. In continuation, this year a project on tree watch and tree mapping were carried out for diff. species. We found that our campus has Paarijat (*Nyctanthes arbor-tristis*), Adulsa (*Adhatoda vasica*), Pimpal (*Ficus religiosa*), Shataavari (*Asparagus officinalis*), and Neem trees (*Azadirachta Indica*) etc.

KEY ACTIVITIES – 2024-2025

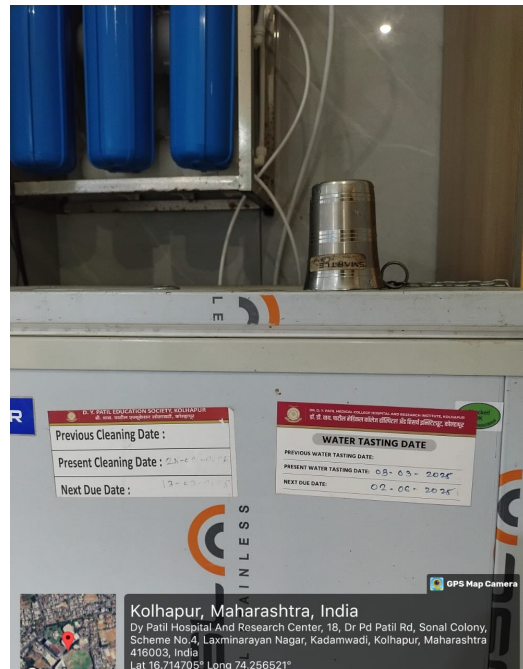
- Celebration of World Environment Day by staff and students of university on 05/06/2024
- “Tree Plantation” by teachers & staff carried out in campus on 15th OJune 2024.
- Poster presentation on Environmental Pollutants 6th June 2024.
- Environmental Pollutants – activity 06th July 2024.
- “Vrukshved” – Indoor Plant exhibition conducted
- Global Warming & Career Opportunities- Guest lectures by expert on 24th Dec 2024
- On the occasion of “Vanmahotsav 2024” D.Y. Patil college of Nursing carried out Awareness Rally on theme “Save tree Save Earth”.



17.0 ANNEXURE – PHOTOGRAPHS OF ENVIRONMENT CONSCIOUSNESS

Water storage - With cleaning frequency and distribution system in the campus

There are 4 underground storage tanks with capacity Of 185000 Lit. and 13 Water Tanks on the Roof of college with 3,76,000 storage capacity. Water from these tanks is distributed to various laboratories, departments, washrooms and water filter through pipelines.



Solid Waste Management in college:

Facilities in the Institution for the management of the following types of degradable and non-degradable waste

- Compost Bed is also built for Solid waste management of garden



Dustbins kept to collect the solid waste:





Local Municipality Vehicle collect the Solid waste:



E-Waste management:

The university has negligible E-Waste. Computers, printers and other ICT equipment which cannot be used are sold to vendors for recycling or buy back schemes.



NSS Cleaning Activity (Swachhata hi Seva):



Metal, wood, glass and plastic scrap collected from laboratories, library, office and college campus is given to related scrap dealer for recycling.

For OT, Labs liquid waste management ETP & Domestic waste water STP provided in campus:



Rain Water Harvesting System: Used to ground water recharge



Tree Plantation by students, teachers and Guests:

On the occasion of Vanmahotsav 2024 at D.Y. Patil college of Nursing carried out Awareness Rally on theme "Save tree Save Earth". For this event IQAC director Dr. Shimpa Sharma, Principal Dr. Umarani, Vice Principal Prof. Manisha Bijapurkar, Associate Professor Sheetal Kamble, This event was Organised by Ms Richa Jadhav Faculty NSS unit. 50 NSS students attended this event.





Display of Environment related slogans in college campus:

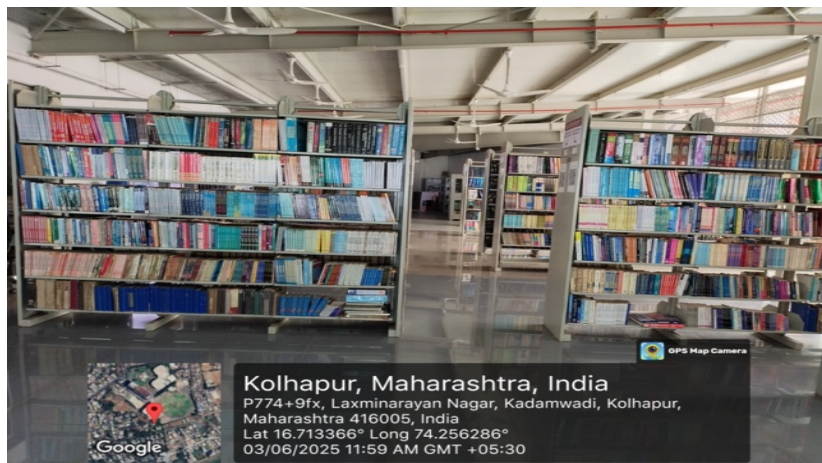
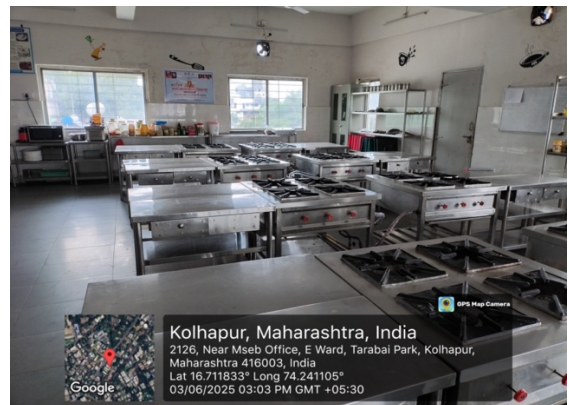
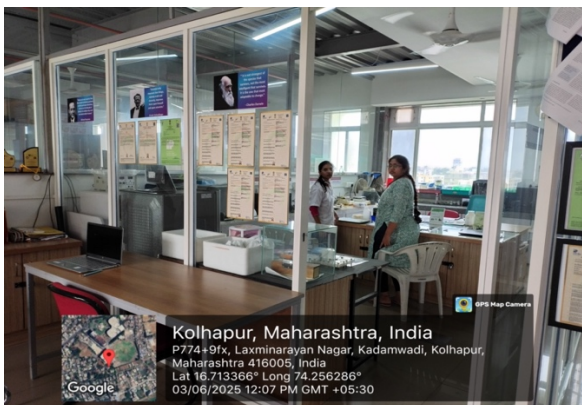




Health and Safety measures used in campus buildings:



Spacious and ventilated Class rooms/Laboratory/Library:



Botanical Garden



Greenery in Campus area







Water Conservation by using drip irrigation system



Parking facility



Identification of plant species in college campus:

Sr. No.	Botanical Name	Local Name	Family
1	<i>Adathoda vasica</i>	Adulasa	Acanthaceae
2	<i>Bauhinia Purpurea</i>	Kanchan	Legumes
3	<i>Alstonia scolaris</i>	Saptaprni	Apocynaceae
4	<i>Peltophorum</i>	Piwala gulmohar	Fabaceae
5	<i>Spathodea campanulata</i>	African tuliptree	Bignoniaceae
6	<i>Couroupita Guianensis</i>	Kaelaspati	Lecythidaceae
7	<i>Azadirachta indica</i>	Kadunimb	Meliaceae
8	<i>Lagerstroemia flos-reginae</i>	Tamhan	Lythraceae
9	<i>Cassia fistula</i>	Bahava	Legumes
10	<i>Cinnamomum cassia</i>	Daalchini	Laurels
11	<i>Casurina equisetifolia</i>	Suru	Casurinaceae
12	<i>Pterocarpus santalinus</i>	Rakta Chandan	Legumes
13	<i>Ficus racemosa</i>	Udumbara	Moraceae (Mulberry family)
14	<i>Aloe barbadensis</i>	Korfad	Asphodelaceae
15	<i>Coccus nucifera</i>	Naral	Arecaceae
16	<i>Cyperus Rotundus</i>	Nagarmotha	Sedges
17	<i>Asparagus officinalis</i>	Shataavari	Asparagaceae
18	<i>Eucalyptus globulus</i>	Nilgiri	Myrtaceae
19	<i>Aegle marmelos</i>	Bael tree	Rutaceae
20	<i>Ficus benghalensis</i>	Vad	Moraceae
21	<i>Mimosa pudica</i>	Lajalu	Fabaceae
22	<i>Ficus racemosa</i>	Pimpal	Moraceae
23	<i>Nyctanthes arbortristis L.</i>	Paarijat	Oleaceae
24	<i>Curcuma longa</i>	Halad	Zingiberaceae
25	<i>Acorus calamus</i>	Sweet flag- Vekhand	Acoraceae
26	<i>Ocimum tenuifloram</i>	Krishna tulas	Lamiaceae
27	<i>Eclipta prostrate</i>	Mhaka	Asteraceae
28	<i>Licuala grandis</i>	Ram Tulas	Lamiaceae
29	<i>Mimusops ellengi</i>	Bakul	Sapotaceae
30	<i>Cymbopogon citrates</i>	Gavati Chaha	Poaceae
31	<i>Mentha</i>	Pudina	Lamiaceae
32	<i>Nyctanthus arbor-tristis</i>	Parijat	Oleaceae
33	<i>Citrus limon</i>	Lemon	Rutaceae
34	<i>Mimusops elengi</i>	Bakul	Sapotaceae
35	<i>Polyalthia longifolia</i>	Ashok	Myrtaceae
36	<i>Bacopa monnieri</i>	Brahmi	Plantaginaceae
37	<i>Costus igneus</i>	Insuline	Costaceae
38	<i>Pterospermum acerifolium</i>	Muchukunda	Sterculiaceae
39	<i>Bixa orellana</i>	Shendri	Bixaceae
40	<i>Tamarindus indica</i>	Chinch	Caesalpinaceae
41	<i>Coleus aromaticus</i>	Pan Owa	Lamiaceae
42	<i>Centella asiatica</i>	Mandukparni	Apiaceae
43	<i>Bryophyllum pinnatum</i>	Panfuti	Crassulaceae
44	<i>Tinospora cordifolia</i>	Gulvel	Menispermaceae

TRANSPARENCY OF GREEN AUDIT REPORT

Green audit report is one of the useful means of demonstrating an organization/Institution's commitment to openness and transparency. If an Institute believes it has nothing to hide from its stakeholders, then it should feel confident enough to make its green audit reports freely available to those who request them. As a basic rule, green audit reports should be made available to all stakeholders.



Office Address: Office No-403, Fourth Floor, Chaitanya Terrace Sr. No. 43/31, 32, 33, behind Ganapati Temple, Manaji Nagar, Narhe, Pune, Maharashtra 411041 India.